

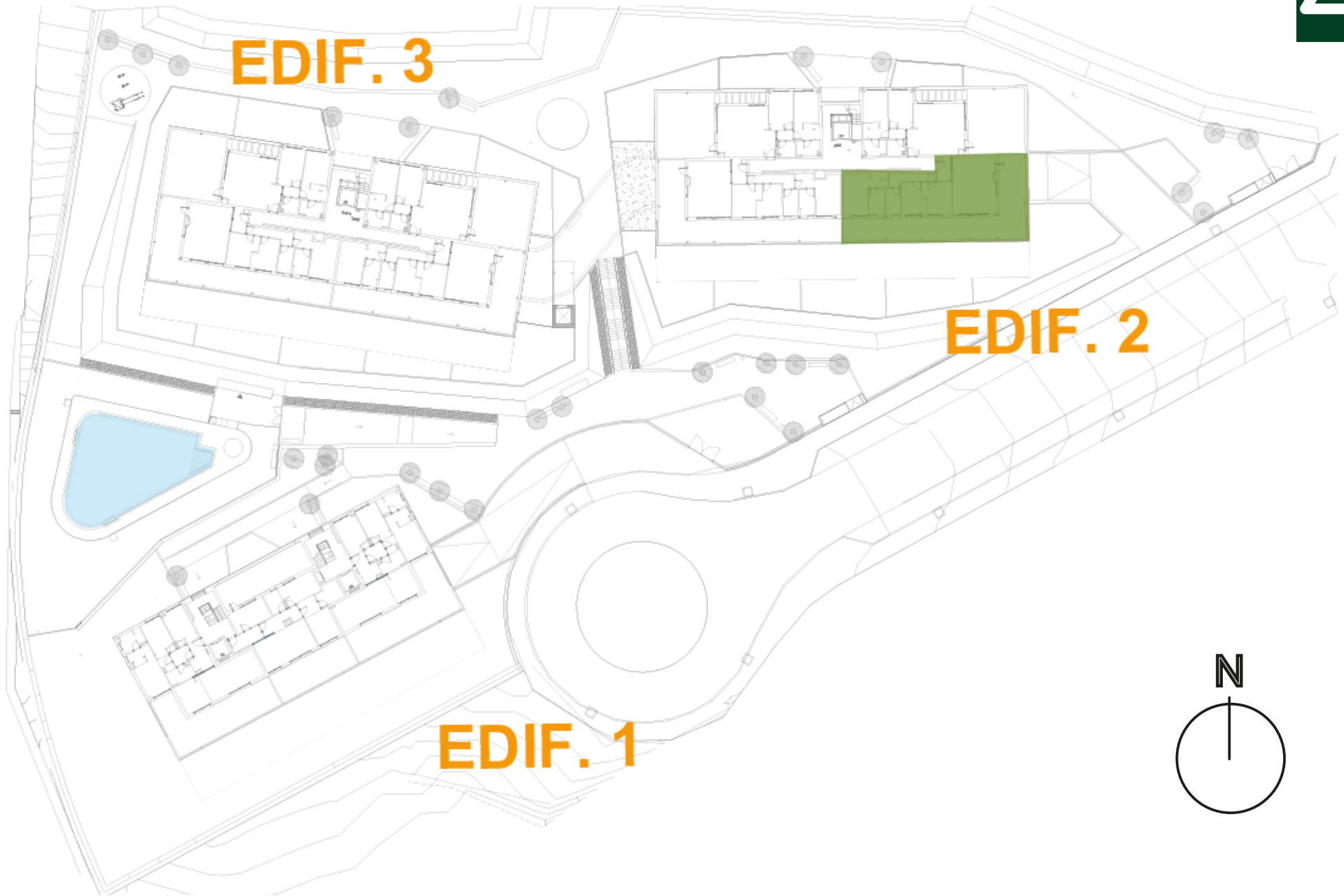


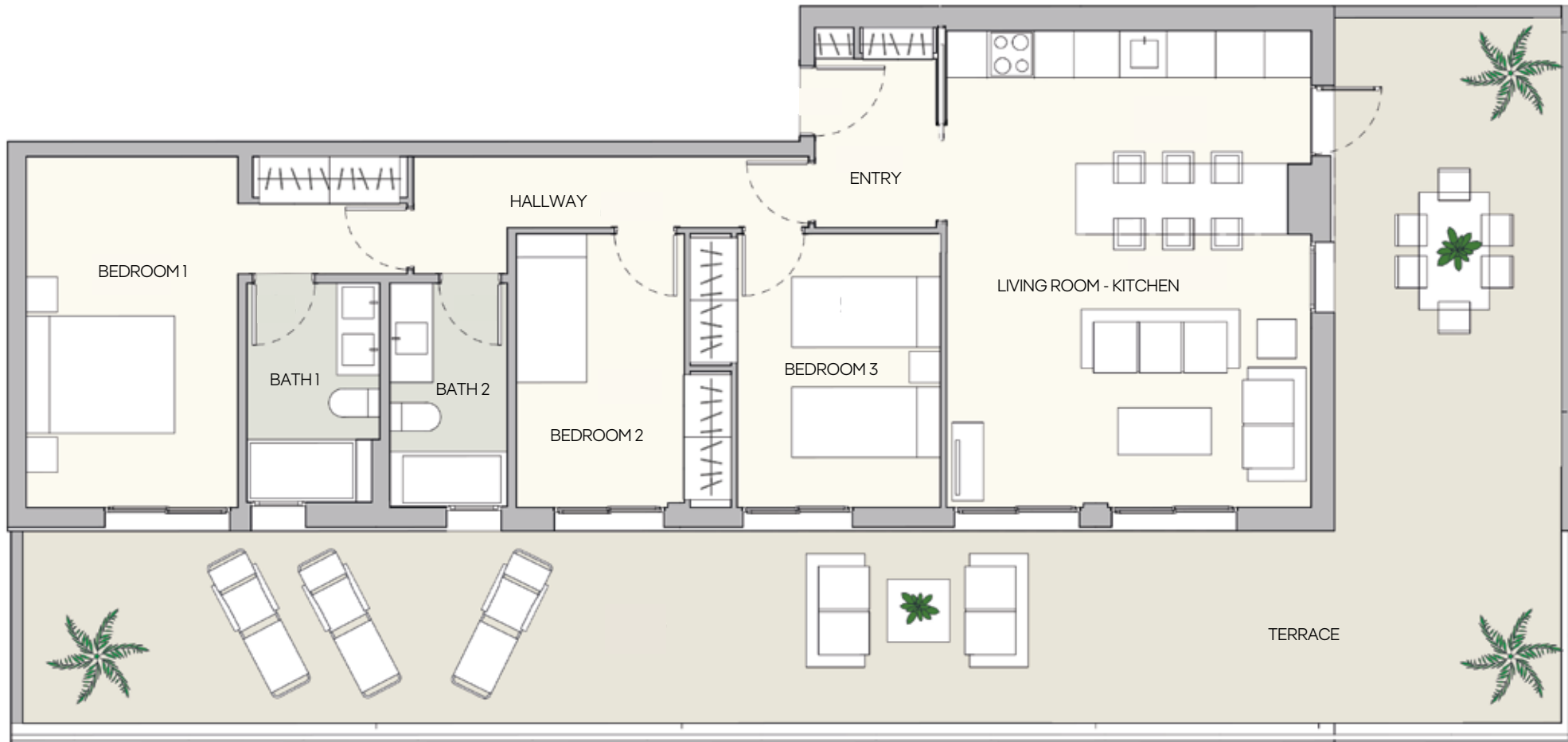
FLOORPLANS



Information available on site:
Urbanización Finca Camarate Golf
c/ Maria Teresa de León, 29690 - Casares, Málaga

Costa del Sol
Málaga



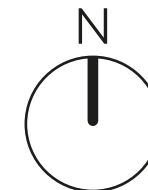


Building 2
Stairway 1
Attic Level Unit C

BUILT AREA (with Common Areas)	107.85 m ²
USABLE AREA (enclosed)	80.06 m ²
Built area as per s/D JA 218/2005	116.45 m ²
Useable area as per s/D JA 218/2005	88.07 m ²

LIVING ROOM - KITCHEN	36.05 m ²
BEDROOM 1	15.27 m ²
BEDROOM 2	8.55 m ²
BEDROOM 3	10.11 m ²
BATH 1	4.68 m ²
BATH 2	4.28 m ²
ENTRY	3.74 m ²
HALLWAY	5.31 m ²
TERRACE	66.84 m ²

ATTIC HOME



Developer: IBERDROLA INMOBILIARIA, S.A.U.
Address: C/ Alcalá no. 265, 28027 Madrid, Spain and Tax ID (CIF) A-79850574.
Registered in the Madrid Central Mercantile Register, Volume 729, Folio 74, Page M-14744, Entry 1.

The Abridged Informational Document referred to in Decree 218/2005 of 11 October approving the Regulation on consumer information for selling and renting housing in Andalusia is publicly available at our sales office.

The visual material that appears in this brochure is for illustrative purposes only. It is based on a preliminary project design and is subject to technical and planning changes until the project plan is finalised. The final design will be made available to the purchaser at the sales office once it has been duly approved by the City Council.

The furnishings used in this brochure and the characteristics thereof are for staging purposes only and are not contractually binding. The information appearing in this brochure has been translated into English from Spanish. In case of any dispute, the Spanish language version shall prevail.



Leasing agency: MxM Group

+34 667 907 841

+34 952 783 531

info@mxmrealestate.com

visit our website



www.iberdrolainmobiliaria.com/residencial